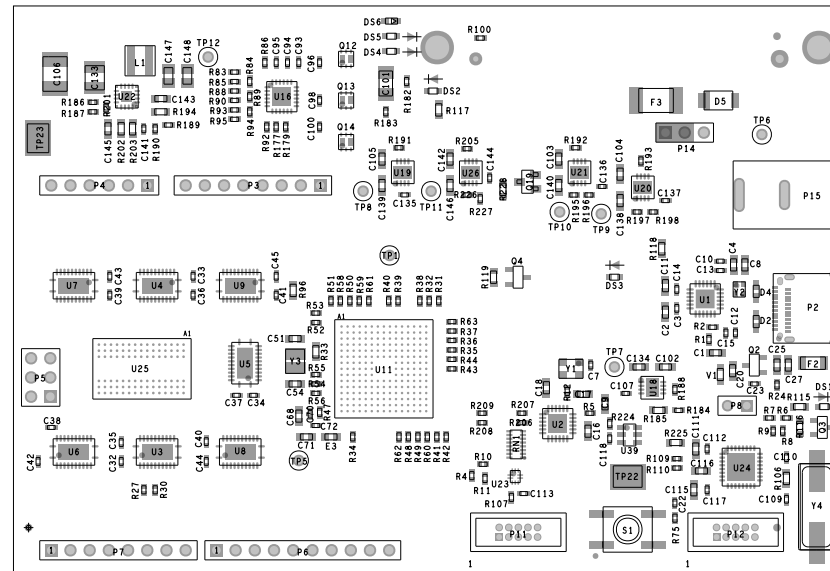



REVISION				
REV	DESCRIPTION	DATE	APPROVED	
A	INITIAL RELEASE	10/10/18	E. WALSH	
B	ECR-083623	23/01/19	E. WALSH	
C	ECR-089103	27/06/19	S. DOYLE	
D	ECR-090599	07/10/19	S. DOYLE	
E	ECR-096634	09-JUL-20	S. DOYLE	



**Notes:**

1. ADD SHORTING BLOCK ON P14 IN LOCATION SHOWN (1.8V).
2. ADD 4 x RUBBER FEET (see BOM) ON THE SECONDARY SIDE OF THE BOARD IN THE LOCATIONS SHOWN..

UNLESS OTHERWISE SPECIFIED DIMENSIONS ARE IN MM		<div></div> <div>ANALOG DEVICES</div>		ANALOG DEVICES INTERNATIONAL		
TOLERANCES				ERDC Building		
DECIMALS FRACTIONS ANGLES .XX +/- 0.25 +/- 1/32 +/- 2 .XXX +/- 0.127				Raheen Business Park Raheen, LIMERICK, IRELAND		
ASSEMBLY		APPROVAL	DATE	TITLE		
		MATERIAL				
		DRAWN BY PADDY DUIGHAN 09-JUL-20				
		DESIGNED				
		CHECKED	SDP - K1			
FINISH		APPROVED	SIZE	FSCM NO	DRAWING NUMBER	REV
		MFG ENGINEER	A4		01-049259-01	E
DO NOT SCALE DWG		SCALE	1/1		SHEET 1 OF 2	

